

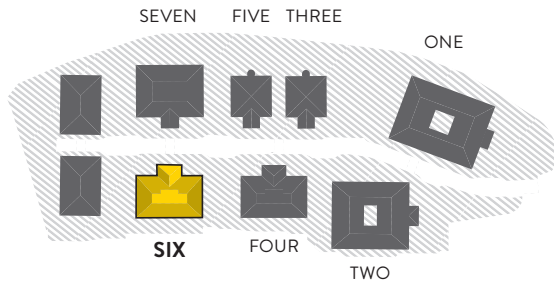
SIX DORKING OFFICE PARK

MODERN OPEN PLAN OFFICES

SUITES AVAILABLE FROM 1,000 SQ FT

DORKING
OFFICE PARK





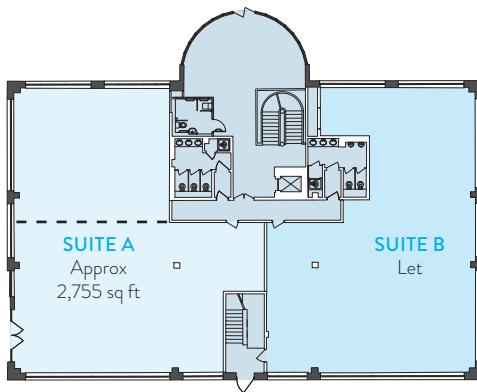
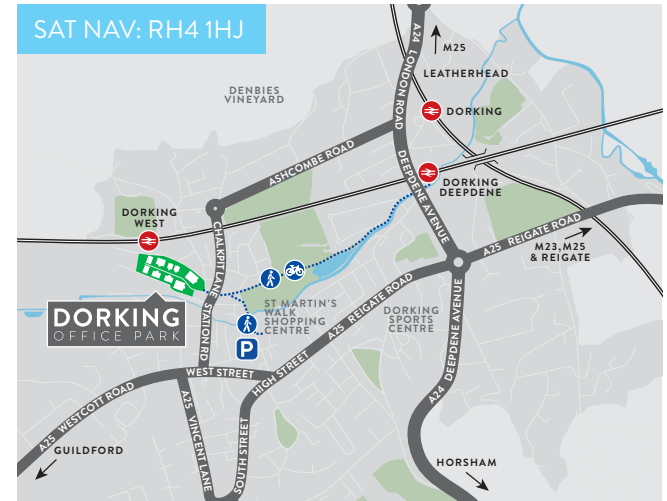
Six Dorking Office Park is a detached two storey office building with both surface and basement car parking. The building is accessed by a full height glazed reception with a galleried first floor landing, and the accommodation provides open plan offices together with a second floor suite suitable for a variety of uses.

The building is undergoing refurbishment to provide high specification contemporary office accommodation to include new comfort cooling, new ceilings and LED lighting, newly fitted WCs, a new shower facility, raised access floors (ground and first only) and an enhanced entrance reception area.

SCHEDULE OF AREAS	NIA SQ FT
SECOND FLOOR STORAGE / BREAKOUT	1,609
FIRST FLOOR SUITE A	2,800
GROUND FLOOR SUITE A	2,755
TOTAL	7,164

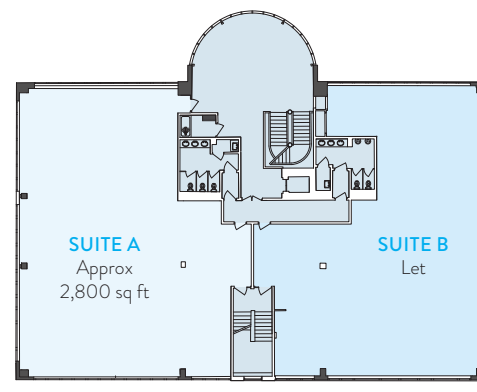
The 1,609 sq ft on the second floor is suitable for storage, breakout or meeting room use.

These are approximate floor sizes only and will be remeasured on completion of subdivision works.

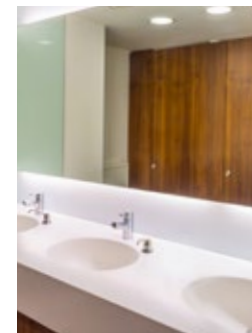


GROUND FLOOR
2,755 SQ FT (255 SQ M)

The dashed line on the ground floor plan shows possible sub-division option of 1,050 sq ft and 1,700 sq ft.



FIRST FLOOR
2,800 SQ FT (260 SQ M)



Indicative photographs of other refurbished offices on the Park

DORKINGOFFICEPARK.COM



TIM HODGES
tim.hodges@altusgroup.com
DDI: 01737 243328
M: 07818 514403

NATHALIE GEORGE
nathalie.george@altusgroup.com
DDI: 01737 243328
M: 07976 681953



KEVIN HAWTHORN
khawthorn@hanovergreen.co.uk
DDI: 020 3130 6404
M: 07793 325308

Misrepresentation Act 1967: Whilst all the information in these particulars is believed to be correct, neither the agent nor their client guarantee its accuracy nor is it intended to form part of any contract. The particulars are provided in good faith but any information should be confirmed before being relied upon. All prices / rents exclusive of VAT where applicable. Compiled February 2018.

S09241 | siren | +44 (0)20 7478 8300 | sirendesign.co.uk