

# TWO DORKING OFFICE PARK

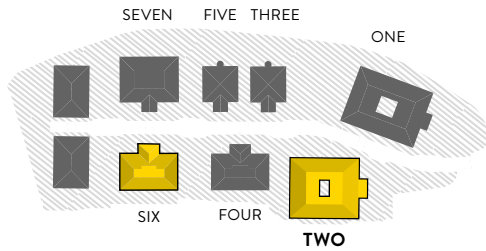
MODERN OPEN PLAN OFFICES

2,500 – 28,993 SQ FT (232 – 2,694 SQ M)

**DORKING**  
OFFICE PARK

# TO LET





SAT NAV: RH4 1HJ

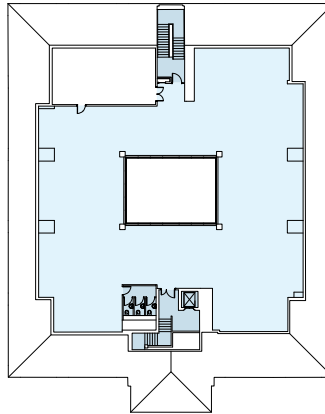
Two Dorking Office Park is a contemporary, modern office building.

The three floors provide an inviting and motivating environment for business with natural daylight flooding through the central atrium and full height glazed reception.

- Triple storey office with central atrium
- VRF cooling and heating
- Double height reception
- Raised floors
- 3 showers
- Passenger lift
- 100 parking spaces (1:281 sq ft)
- Cycle racks
- EPC C

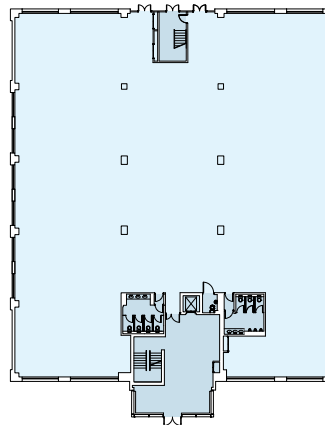
## SECOND FLOOR IPMS-3

6,012 SQ FT (559 SQ M)  
With potential to divide from 2,500 sq ft

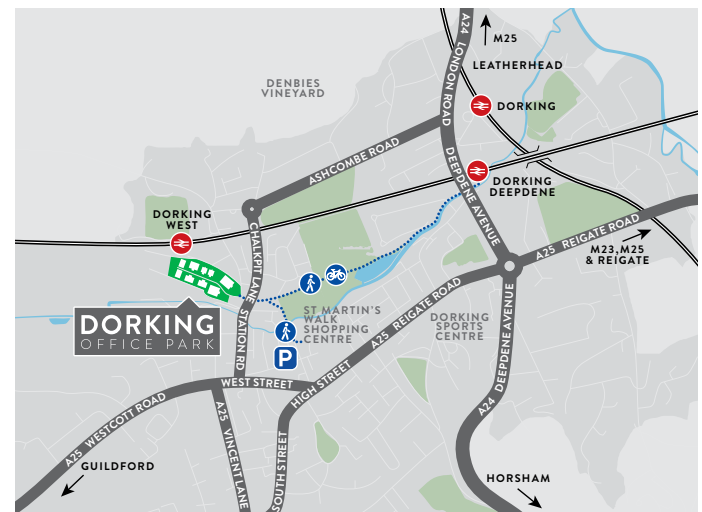


## GROUND FLOOR IPMS-3

11,219 SQ FT (1,042 SQ M)



Not to scale. Indicative plans only.



SCHEDULE OF AREAS	NIA SQ FT	IPMS-3 SQ FT
SECOND FLOOR	5,772	6,012
FIRST FLOOR	10,607	10,923
GROUND FLOOR	10,997	11,219
RECEPTION	809	839
<b>TOTAL</b>	<b>28,185</b>	<b>28,993</b>



**TIM HODGES**  
tim.hodges@altusgroup.com  
DDI: 01737 243328  
M: 07818 514403



**KEVIN HAWTHORN**  
khawthorn@hanovergreen.co.uk  
DDI: 020 3130 6404  
M: 07793 325308

Developed by  
**AEW UK**  
SOUTH EAST OFFICE FUND

[DORKINGOFFICEPARK.COM](http://DORKINGOFFICEPARK.COM)

Misrepresentation Act 1967: Whilst all the information in these particulars is believed to be correct, neither the agent nor their client guarantee its accuracy nor is it intended to form part of any contract.

The particulars are provided in good faith but any information should be confirmed before being relied upon. All prices / rents exclusive of VAT where applicable. Compiled February 2018.

S08293 | siren | +44 (0)20 7478 8300 | sirendesign.co.uk